

BLOOMINGTON URBAN WOODLANDS PROJECT NEWS



With donations from the Indiana University Caving Club and a grant from the Sassafras Audubon Society, we installed owl and bat boxes in Dunn’s and Latimer Woods this spring. Owls are predators that can help keep small herbivores, such as rabbits in check. Bats help to control mosquitos.

DO YOU WANT TO GET INVOLVED? CONTACT US!
BUWPROJECT@GMAIL.COM

WHY PLANT NATIVE?

Native plants provide food and shelter to birds, butterflies and other native wildlife, fostering the biodiversity of our woodlands. Biodiversity supports numerous ecosystem services.

ECOSYSTEM SERVICES¹

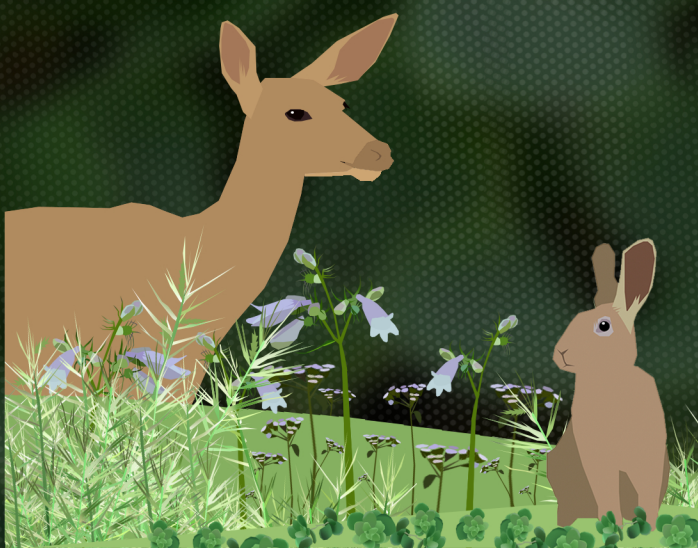
- **Supporting services:** nutrient recycling, primary production, soil formation
- **Provisioning services:** food, raw materials, water, minerals, energy
- **Regulating services:** carbon sequestration, waste decomposition, climate and disease control, stormwater regulation
- **Cultural services:** recreational opportunities, aesthetic and historic value, support of physical and mental health and cognitive development

¹Millennium Ecosystem Assessment, 2005. Ecosystems and Human Well-being: Synthesis. Island Press, Washington, DC.

NATIVE WOODLAND PLANTS



**BEAUTIFUL OPTIONS
FOR YOUR LAND THAT
WON'T BE BREAKFAST
FOR BUNNIES OR
DINNER FOR DEER**



RABBIT AND DEER RESISTANT SPECIES FOR NATIVE WOODLAND PLANTINGS



White Snakeroot, *Ageratina altissima*



Mistflower, *Conoclinium coelestinum*



Sensitive Fern, *Onoclea sensibilis*



Calico Beardtongue, *Penstemon calycosus*



Wild Ginger, *Asarum canadense*



Lady Fern, *Athyrium filix-femina*



Hairy Wood Mint, *Blephilia hirsuta*



Wild Stonecrop, *Sedum ternatum*

LEARN MORE AT:
[SUSTAIN.INDIANA.EDU/PROGRAMS/BUWP](https://sustain.indiana.edu/programs/buwp)



Bloomington Urban Woodlands Project



@buwproject



@buwproject

This publication was supported by charitable contributions to the Bloomington Urban Woodlands Project. Authors: Heather Reynolds and Zoe Need. Graphic Design: Zoe Need. Photo Credits: Creative Commons (White Snakeroot, Calico Beardtongue), Zoe Need (Mistflower, Wild Stonecrop, Hairy Wood Mint), Jonathan Bauer (Sensitive Fern, Lady Fern). Brian Forist, Peter Slothower, and Ellen Jacquart provided valuable input.